

MOVING UP TO... DE WARENNE ACADEMY



A HANDY GUIDE FOR STUDENTS AND PARENTS



WELCOME TO

DE WARENNE ACADEMY!

OUR ETHOS

There are three principles
which make up the
“De Warenne Values”:

1.

TREAT PEOPLE
EQUALLY AND
WITH RESPECT

2.

ALWAYS BE YOUR
BEST

3.

KEEP EXPECTATIONS
HIGH

A DAY AT

DE WARENNE



A typical day in Year 7 at De Warenne Academy looks like this:

8:25am – 9:25am	Period 1
9:25am – 10:25am	Period 2
10:25am – 10:45am	Break
10:45am – 11:00am	Form / Assembly
11:00am – 12:00pm	Period 3
12:00pm – 12:30pm	Period 4
12:30pm – 1:00pm	Lunch
1:00pm – 1:30pm	Period 4 (continued)
1:30pm – 2:30pm	Period 5
2:30pm – 3:30pm	Enrichment Activities

ENRICHMENT

Even though lessons end at 2:30pm, the academy day does not! There are many after-school enrichment activities and clubs to choose from, both academic and non-academic.

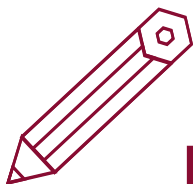
Some examples are:



Football



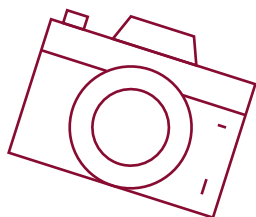
Drama



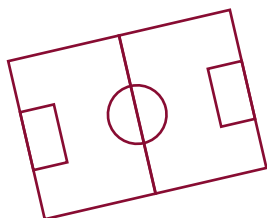
Eco Council



Photography



ICT



Remember to join in!

UNIFORM

Please make sure all uniform is
labelled with your name!

DELTA LOGO BLAZER

WHITE SHIRT

(needs to be buttoned to the neck and tucked
in)

BLACK TROUSERS

Or knee-length skirt

FLAT, PLAIN BLACK SHOES

that can be polished
(no trainers, pumps or boots and no
embellishments)

**DELTA ACADEMIES TRUST
CLIP-ON TIE**

BLACK, WHITE OR GREY SOCKS

**OPTIONAL:
PLAIN BLACK V-NECK JUMPER**



PE KIT

- Delta PE top
- Plain black tracksuit bottoms (no leggings).
- Delta PE shorts or black shorts / skorts.
- Plain black socks.
- Dark-coloured trainers with laces.

OTHER INFORMATION

MAKE-UP

- No make-up allowed.
- No false eyelashes / eyebrows allowed.

HAIR

- Only natural hair colours are permitted.
- Short cuts below number two are not permitted.
- Shaved pattsens are not permitted.
- Long hair should be tied up in PE lessons.

NAILS

- No nail polish or false / acrylic nails.

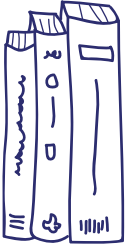
JEWELLERY

- Analogue / digital watches are allowed (no smart watches).

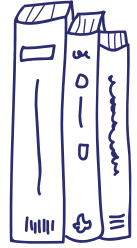
//

Even the smallest
actions are steps in
the right direction.





EQUIPMENT



DON'T FORGET YOUR...

SCHOOL BAG



PLANNER

PEN



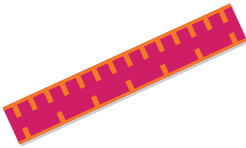
PENCIL

RULER



COLOURED PENCILS

CALCULATOR



COMPASSES

PROTRACTOR



PE KIT



ATTENDANCE

Attendance and punctuality are really important to help you get the most out of being at De Warrenne Academy. We'd love for you to be in school 100% of the time!

**GOOD
ATTENDANCE**

=

**MORE
LEARNING
OPPORTUNITIES**

=

**MORE
LIFE CHANCES**

Did you know?

95%



95% attendance might sound good, but that's 10 days of school missed. That's 50 lessons!



Being 10 minutes late every day is equal to missing nearly a whole week of school.

1 GCSE
grade drop!

For every 17 days of school missed, you're likely to drop one grade at GCSE.

At De Warrenne Academy, we set form groups challenges to improve their attendance. We also celebrate good attendance in assemblies and with rewards such as certificates, free lunches, and prize draws.

All the more reason to make sure your attendance is excellent!

FAQ

How will my child know where to go on the first day?

Plenty of staff will be on hand to meet your child outside the school and direct them to the appropriate place. Our Year 7 form tutors will also be there to escort students. We have traditionally brought Year 7 into school for a part day before the rest of the school return – it is likely that we will follow this model again in 2024.

Will I be in the same tutor group as my friends?

We try to put people in a tutor group with people some of their friends but likely not all of them. We do not want you to feel isolated, so we ask your Year 6 teachers who you get on with. We use that information to help us put together the form groups. When you are at secondary school you have lots of different lessons in different teaching groups so you will meet lots of new people and make lots of new friends too.

How does lunch time work?

In the Delta Diner Year 7 have their lunch by themselves which is at 12:30. There is a large selection of foods prepared at breaktime and lunch. Bacon sandwiches, toast and bagels are prepared on a daily basis at breaktime. There is always a hot dinner prepared everyday along with sandwiches and desserts. Parents/Carers add money to the My Child At School APP and you will use your fingerprint to pay for items at the till.



**GARDENS LANE
CONISBROUGH
DONCASTER
DN12 3JY**

**DEWARENNE.ORG.UK
01709 864001**

 **INFO@DEWARENNE.ORG.UK**

 **@DELTADEWARENNE**

instagram.com/delta_dewarenne